

FAIRWAYS at MEDINA ELVIRA | FRONTLINE GOLF LUXURY APARTMENTS, PENTHOUSES AND LOFTS



FAIRWAYS
MEDINA ELVIRA



GRANADA

Almost unrivalled for its beauty and architectural design, the historic city of Granada has been declared a national monument of Spain and is home to UNESCO world heritage site THE ALHAMBRA. Situated only ten minutes drive from Fairways, The Granada city centre offers a bustling cosmopolitan experience where daily concerts, cultural shows, tapas bars and restaurants are in abundance. Nearby Granada international airport is a low fare airline destination linking it with other major European cities. Combine this with Granada's fantastic infrastructure and low cost of living, the city has become a leading European property hotspot. According to figures from the Spanish ministry of housing, Granada's real year on year capital appreciation is estimated at 14%.

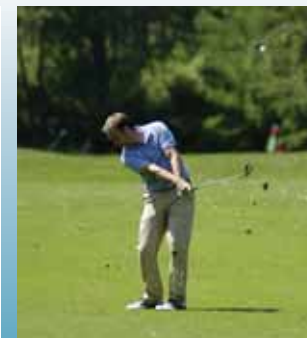


SIERRA NEVADA



Sierra Nevada, Spain's best ski resort, was home to the 1996 World Championship for Alpine ski. Only 25 minutes away from MEDINA ELVIRA and at 3500 meters above sea level, the resort boasts 85 ski-slopes open from November until May. During the summer months Sierra Nevada's main draw is for outdoor hiking activities, horse-back riding and mountain biking. For those of you less active Sierra Nevada is famous for its wild flowers, endemic plant species and diverse wildlife.

MEDINA ELVIRA



MEDINA ELVIRA Golf Resort and Country Club is unique to Granada. The resort features an 18 hole Championship Golf Course & Club House, Boutique Hotel & SPA, Horse-riding Centre, Shopping Arcade, Sports Centre, ample Lakeside Activities, 24 hour Security and a Private School. All this makes MEDINA ELVIRA Granada's finest residential development.

186 FRONTLINE GOLF LUXURY APARTMENTS, PENTHOUSES AND LOFTS

PENINSULA'S LATEST DEVELOPMENT IN THE HIGHLY SUCCESSFUL MEDINA ELVIRA GOLF RESORT



FAIRWAYS is all about views. Spectacular views over the golf valley, panoramic lake views and breath-taking views of the Sierra Nevada. FAIRWAYS offers 25 different types of apartments ranging from lofts, duplex penthouses through to open access garden apartments. Each unit is kitted out with the latest top of the range fittings with unheard of attention to detail. Included in the price each unit has its own parking and storage space. Residents can also enjoy the gymnasium with full height windows and the scandinavian sauna. The impressive swimming pool is surrounded by mature landscaped gardens & sun decks over looking the golf course.

DESIGN QUALITY

- Underground parking
- Automatic Garage Doors
- Lifts to all floors
- Entrance door with double lock
- Video entry phone
- Natural stone flooring
- Mains gas central heating
- Double glazed insulated windows
- Fully fitted hot/cold A.C.
- Fully fitted kitchens
- Full height windows in breakfast area
- Niessen light fittings and power sockets
- Sat TV and ADSL lines.
- Underfloor heating in all bathrooms
- Natural stone walk in showers
- Hydrospa Baths
- Designer bathroom fittings
- Wooden floors in all bedrooms
- Built in wooden wardrobes
- Extensive Terraces with covered area
- BBQ area in Penthouses
- Jacuzzi decks
- Lock up storage rooms
- Concierge service





APARTMENTS

GARDEN APARTMENTS

3, 21, 22 & 24

UPPER LEVEL APARTMENTS

7, 11, 26, 27, 29, 31, 32 & 34

Built Area: 80.06m²

Terrace Area: 38.98m²

Garden Area: 42.50m²

FAIRWAYS

MEDINA ELVIRA



APARTMENTS

GARDEN APARTMENTS
1 & 2

UPPER LEVEL APARTMENTS
5, 6, 9 & 10

Built Area: 81.19m²
Terrace Area: 42.51m²
Garden Area: 62.50m²

FAIRWAYS
MEDINA ELVIRA

Email: nigel@woolfinvestments.com

Telephone Spain: 952 836 113

Telephone UK: 0709 287 9105



APARTMENTS

GARDEN APARTMENTS
4 & 20

UPPER LEVEL APARTMENTS
8, 12, 25 & 30

Built Area: 48.90m²

Terrace Area: 31.71m²

Garden Area: 20.00m²

FAIRWAYS
MEDINA ELVIRA



APARTMENTS

GARDEN APARTMENT
23

UPPER LEVEL APARTMENTS
28, 33 & 40

Built Area: 116.35m²
Terrace Area: 28.39m²
Garden Area: 162.00m²

FAIRWAYS
MEDINA ELVIRA



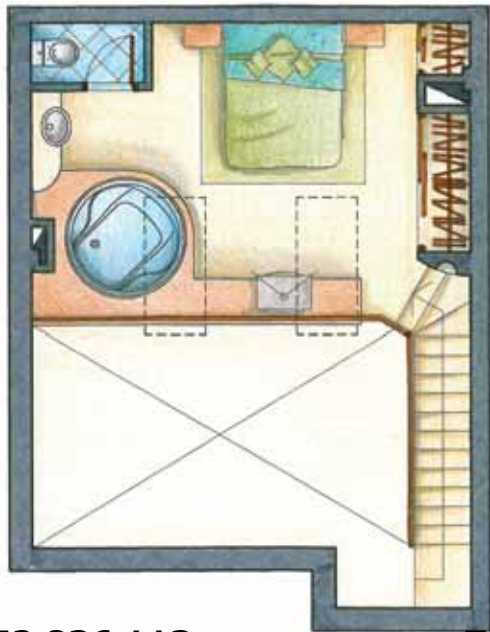
LOFT UNITS

13, 16, 17, 18, 36, 37, 38,
39, 41 & 42

Built Area: 67.76m²

Terrace Area: 21.71m²

FAIRWAYS
MEDINA ELVIRA



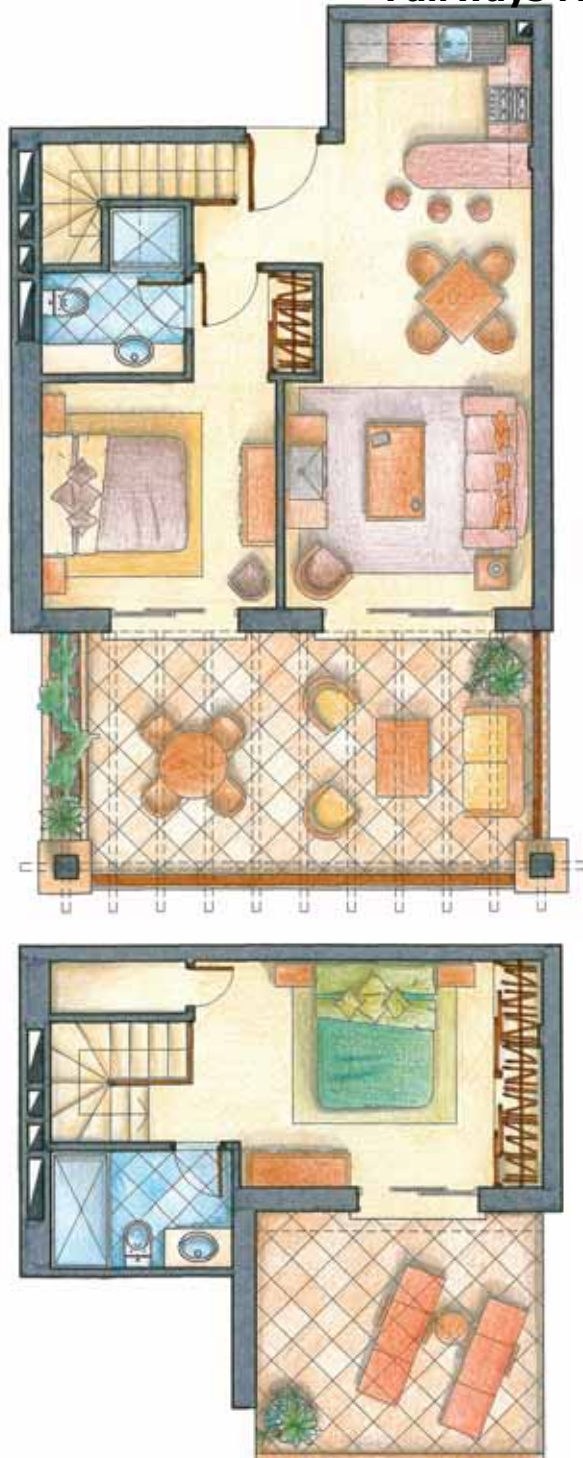
LOFT UNITS

14 & 15

Built Area: 63.82m²

Terrace Area: 12.67m²

FAIRWAYS
MEDINA ELVIRA



PENTHOUSES

19 & 35

Built Area: 75.16m²

Terrace Area: 22.52m²

Roof Terrace: 12.15m²

FAIRWAYS
MEDINA ELVIRA

Email: nigel@woolfinvestments.com

Telephone Spain: 952 836 113

Telephone UK: 0709 287 9105



APARTMENTS

GARDEN APARTMENTS

43, 44, 51, 53, 73, 74, 89,
90, 103, 104, 111, 124, 137,
138, 153, 155 & 175

Built Area: 79.29m²

Terrace Area: 31.53m²

Garden Area: 40.00m²

FAIRWAYS
MEDINA ELVIRA



APARTMENTS

UPPER LEVEL APARTMENTS

45, 46, 47, 48, 54, 56, 57,
59, 60, 62, 75, 76, 77, 78,
79, 80, 91, 92, 93, 94, 95,
96, 105, 106, 107, 108, 109,
110, 113, 115, 117, 126, 128,
130, 139, 140, 141, 142, 143,
144, 156, 158, 159, 161, 162,
164, 178 & 181

Built Area: 79.29m²

Terrace Area: 31.53m²



PENTHOUSES

49, 50 & 184

Built Area: 79.29m²

Terrace Area: 31.53m²

H¹



ROOF TERRACE

49, 50 & 184

Roof Terrace: 77.00m²

FAIRWAYS
MEDINA ELVIRA



APARTMENTS

GARDEN APARTMENTS
176 & 177

UPPER LEVEL APARTMENTS
179, 180, 182 & 183

PENTHOUSE APARTMENTS
185 & 186

Built Area: 82.52m²
Terrace Area: 24.44m²
Garden Area: 40.00m²

FAIRWAYS
MEDINA ELVIRA



ROOF TERRACE

185 & 186

Roof Terrace: 80.00m²

FAIRWAYS
MEDINA ELVIRA



APARTMENTS

GARDEN APARTMENTS
112 & 123

UPPER LEVEL APARTMENTS
114, 116, 118, 125, 127 & 129

Built Area: 83.79m²

Terrace Area: 36.34m²

Garden Area: 40.00m²

FAIRWAYS
MEDINA ELVIRA



APARTMENTS

GARDEN APARTMENTS
52 & 154

UPPER LEVEL APARTMENTS
55, 58, 61, 157, 160 & 163

Built Area: 43.44m²

Terrace Area: 22.09m²

Garden Area: 35.00m²

FAIRWAYS
MEDINA ELVIRA



APARTMENTS

UPPER LEVEL APARTMENTS

67, 70, 83, 85, 99, 134,
148, 150, 168 & 170

PENTHOUSE APARTMENTS

72, 87, 101, 122, 136, 152 & 173

Built Area: 93.20m²

Terrace Area: 26.58m²

FAIRWAYS
MEDINA ELVIRA

Email: nigel@woolfinvestments.com

Telephone Spain: 952 836 113

Telephone UK: 0709 287 9105



ROOF TERRACE

72, 87, 101, 122, 136, 152 & 173

Roof Terrace: 90.00m²



APARTMENTS

GARDEN APARTMENTS

63, 82, 98, 119, 131, 145 & 167

UPPER LEVEL APARTMENTS

66, 68, 84, 86, 100, 133,
147, 149, 169 & 172

Built Area: 107.32m²

Terrace Area: 26.44m²

FAIRWAYS

MEDINA ELVIRA



PENTHOUSES

71, 102, 121, 135 & 174

Built Area: 98.37m²

Terrace Area: 23.72m²

FAIRWAYS
MEDINA ELVIRA

N¹

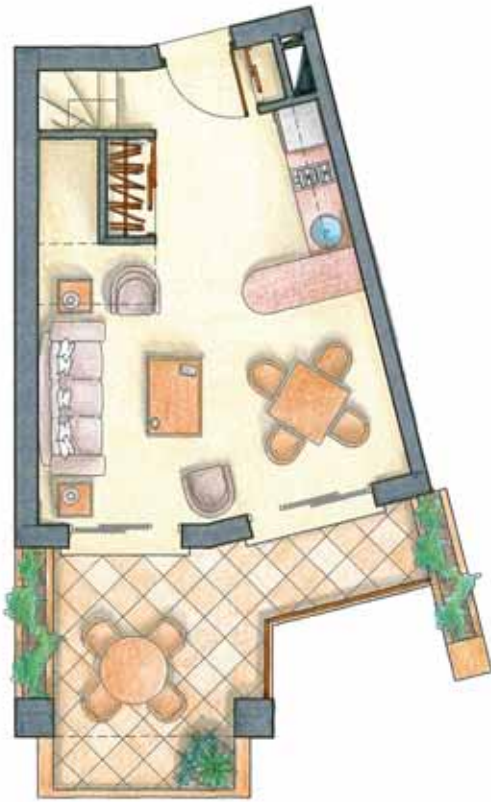


ROOF TERRACE

71, 102, 121, 135 & 174

Roof Terrace: 77.50m²

FAIRWAYS
MEDINA ELVIRA



LOFT UNITS

LOWER LEVEL LOFTS

64 & 166

UPPER LEVEL LOFTS

69 & 171

Built Area: 54.64m²

Terrace Area: 28.00m²

FAIRWAYS
MEDINA ELVIRA

O¹



ROOF TERRACE

69 & 171

Roof Terrace: 35.50m²

FAIRWAYS
MEDINA ELVIRA

Email: nigel@woolfinvestments.com

Telephone Spain: 952 836 113

Telephone UK: 0709 287 9105



APARTMENTS

GARDEN APARTMENTS

65, 81, 97, 120, 132, 146 & 165

Built Area: 98.37m²

Terrace Area: 23.72m²

Garden Area: 35.00m²

FAIRWAYS
MEDINA ELVIRA



PENTHOUSES

88 & 151

Built Area: 106.32m²

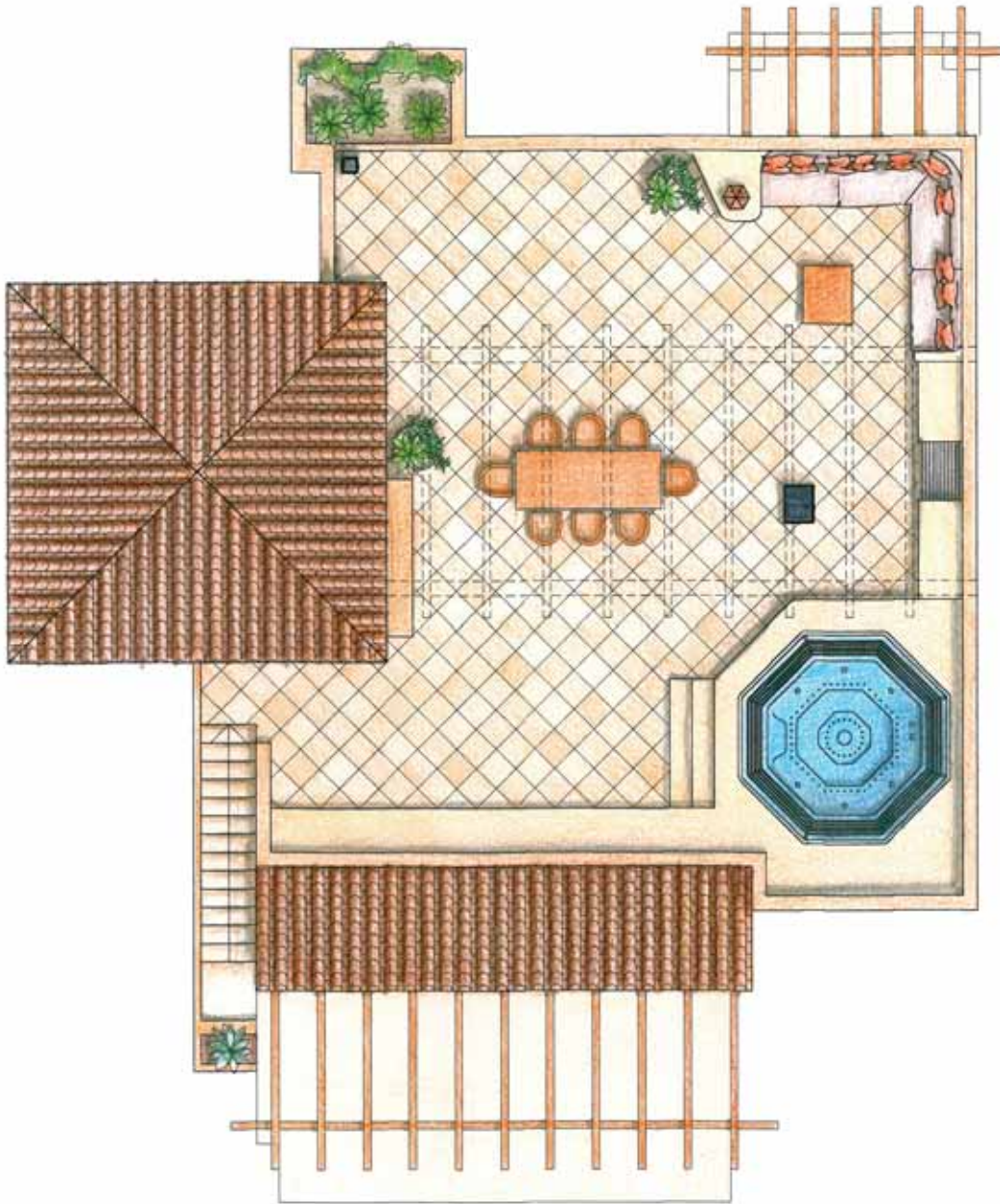
Terrace Area: 25.63m²

FAIRWAYS
MEDINA ELVIRA

Email: nigel@woolfinvestments.com

Telephone Spain: 952 836 113

Telephone UK: 0709 287 9105



ROOF TERRACE

88 & 151

Roof Terrace: 80.00m²

FAIRWAYS
MEDINA ELVIRA

GRANADA'S FINEST RESIDENCE...



PROJECT MANAGEMENT
PENINSULA

